

# Zelio Logic SR2/SR3

Firmware evolution

November 2011

# Why a firmware evolution ?

- Our supplier for the LCD display has stopped producing the initial part we have used from the beginning of production of Zelio Logic SR2/SR3.
- We could not find any 100% compatible display on the market using the same driver.

⇒ A new driver must be used, it is included in the new 4.04 firmware. This firmware has been implemented in ALL **SR2A/SR2B/SR3** between June and October 2011, depending on product reference.



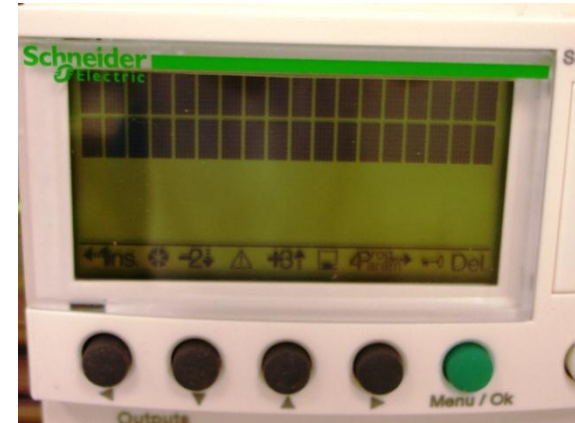
The new firmware is NOT compatible with Zelio soft2  $\leq 4.3$



Zelio soft 2 from V4.4 is compatible with ALL firmwares and versions of SR2/SR3 modules.

# What happen when using the new firmware V4.04 with « old » Zelio soft 2 ≤4.3

- There is no critical risks.
- The LCD display will not work correctly :
  - 2 first lines will be active
  - 2 last lines are inactive
  - All icons are ON
- The transfer of an application made with Zelio soft 2 ≤4.3 and stored in a SR2MEM02 to a module using the new firmware will be not possible. SR2MEM02 must be updated.



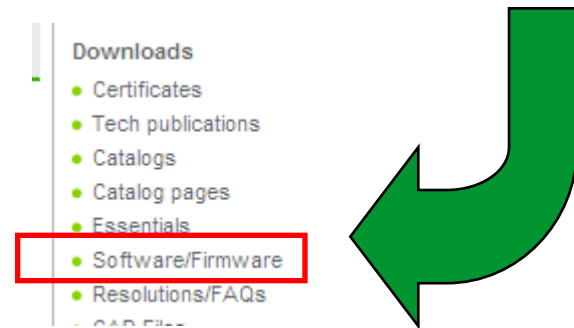
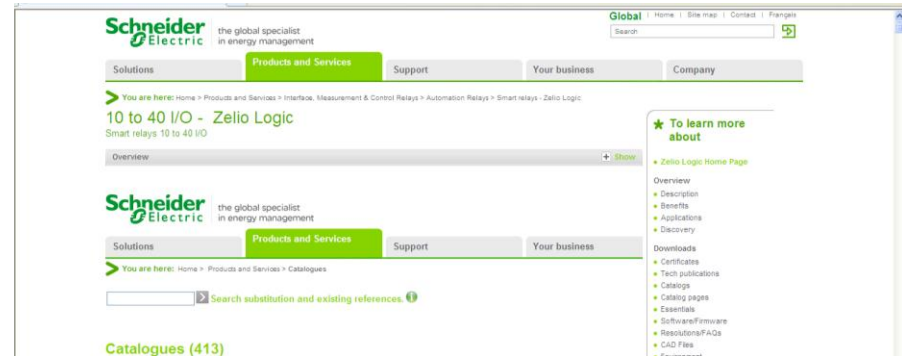
# Compatibility table

		Zelio soft 2 SR2SFT01 version	
		Version $\leq 4.3$	Version $\geq 4.4$
Zelio smart relay Firmware version (*)	Version $\leq 4.03$	COMPATIBLE	COMPATIBLE
	Version $\geq 4.04$	NOT COMPATIBLE	COMPATIBLE

(\*) How to know the firmware version : see appendix.

# Recommendations

- **Push SYSTEMATICALLY your customers to use a version of Zelio soft 2 equal or later than V4.4.**
  - This version is free downloadable from [Schneider-electric.com](http://Schneider-electric.com)
  - SR2SFT01 CD-rom can be ordered to Evreux distribution center
  - The firmware of the smart relay will be updated automatically if required as soon as a transfer will be done between module and computer.
- **Update your SR2MEM02 used with SR2A, SR2B and SR3** which contents applications made with Zelio soft 2  $\leq 4.3$ .
- In some particular cases ( not possible to update Zelio soft 2 immediatly, confirmation of diagnostic error ), please check if it's possible to continue with a previous version of Zelio 2 soft by checking the firmware version of the module ( see appendix ).



# How to update your SR2MEM02 memories ?

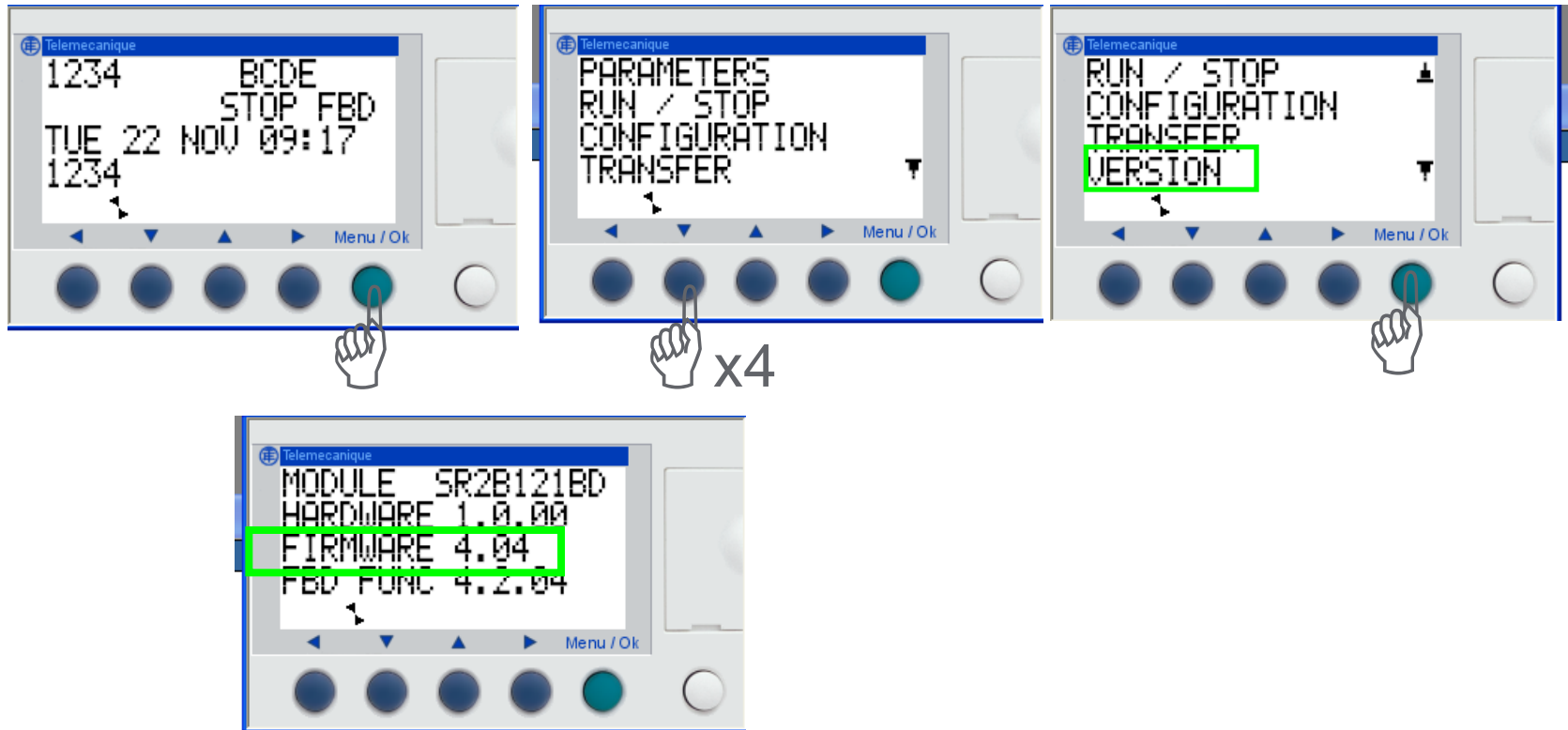
- Install the last version of Zelio soft 2 ( $\geq 4.4$ ) on the computer.
- Open the application file ( .zm2 ).
- Transfer the application from the computer to a module ( don't take care about the hardware version ).
- Install the SR2MEM02 on the module.
- Transfer the application from the module to the SR2MEM02.

- ☺ This memory will be compatible with any firmware version of module.
- ☺ This update is not required for uses with modules without display ( SR2D and SR3D ).

# APPENDIX

How to know the firmware version ?

# How to check the firmware version on the module ?

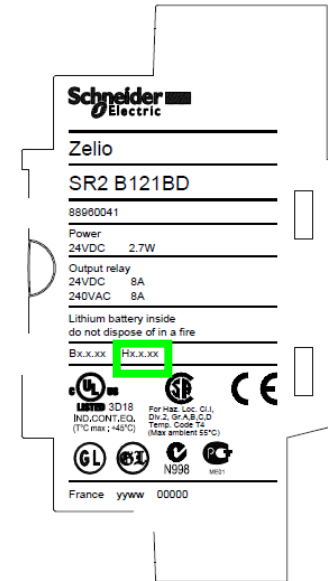


- If the firmware is  $\geq 4.04$  , you **MUST** use Zelio soft 2  $\geq 4.4$
- if the firmware is  $\leq 4.03$ , you can use any version of Zelio soft 2 but **we strongly recommend you to update your Zelio soft 2** as soon as possible to the last version in order to avoid any future compatibility issue.



# Implementation of the new firmware in production

- The new firmware V4.04 has been implemented in production between June 2011 and October 2011, depending on module reference.
- This new firmware has been implemented from the following hardware versions ( printed on the right side of the modules ) :



Ref.Comm.	Hardware version	Ref.Comm.	Hardware version	Ref.Comm.	Hardware version
SR2B121BD	1.0.3	SR2B201B	1.0.4	SR3B261FU	1.0.9
SR2B122BD	1.0.3	SR2B201JD	1.0.4	SR3B261B	1.0.4
SR2B121FU	1.0.8	SR3B101BD	1.0.4	SR2A101BD	1.0.3
SR2B121B	1.0.4	SR3B102BD	1.0.4	SR2A101FU	1.0.8
SR2B121JD	1.0.3	SR3B101FU	1.0.8	SR2A201BD	1.0.5
SR2B201BD	1.0.5	SR3B101B	1.0.4	SR2A201FU	1.0.9
SR2B202BD	1.0.4	SR3B261BD	1.0.5	SR3B261JD	1.0.4
SR2B201FU	1.0.9	SR3B262BD	1.0.4	SR2A201E	1.0.2

Gizli Kahramanınız™

[KonyaEnerji.com.tr](http://KonyaEnerji.com.tr)



**KONYA ENERJİ** ELEKTRİK MALZEMELERİ TİCARET ve SANAYİ LİMİTED ŞİRKETİ

**MERKEZ**

Büsan Özel Org. San. Bölgesi  
Kosgeb Cad. No 66 **KONYA**  
T: 0 (332) 345 09 00  
F: 0 (332) 345 09 09  
[bilgi@konyaenerji.com.tr](mailto:bilgi@konyaenerji.com.tr)

**ŞUBE 1**

Konya Org. San. Böl. Yaylacık Cad.  
No 13/17 (Org. Böl. Müd. arkası) **KONYA**  
T: 0 (332) 239 13 95  
F: 0 (332) 239 13 99

**ŞUBE 2**

Şekiceşme Mah. Atatürk Bulvarı  
No 94/A **KARAMAN**  
T: 0 (338) 214 99 29  
F: 0 (338) 214 99 28